

Annexure II

Feed Back Data for the Academic Year 2017-2018

The Madura College(Autonomous)				
S.No	Categories	Good/ Excellent	Adequate/ Satisfactory	Changes/ More required
1	Curriculum / Syllabus design	189	165	164
2	Teaching (Any other remarks)	390	75	52
3	Teacher-Student Relationship	320	140	55
4	Infrastructure facilities	252	90	167
5	Co-curricular activities	242	220	65
6	Sports facilities	274	190	62
7	Placement Activities	189	207	102
8	Counselling programmes	210	218	78
9	Skill training programmes	230	190	95
10	Cultural Activities	319	136	58
11	Welfare measures	274	201	42
	Total	2889	1832	940

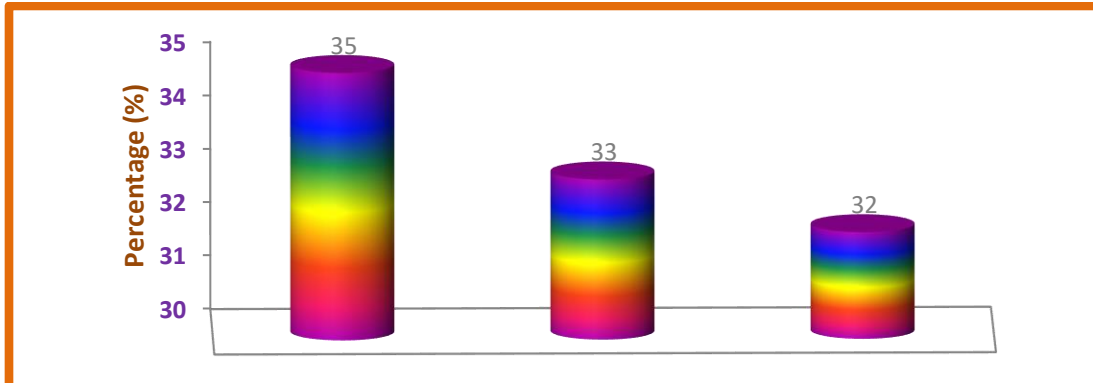
*Number of students given feedback 512

Question No = 1
Curriculum / Syllabus design

Good /Excellent = 189

Adequate/ Satisfactory = 165

Changes required = 164

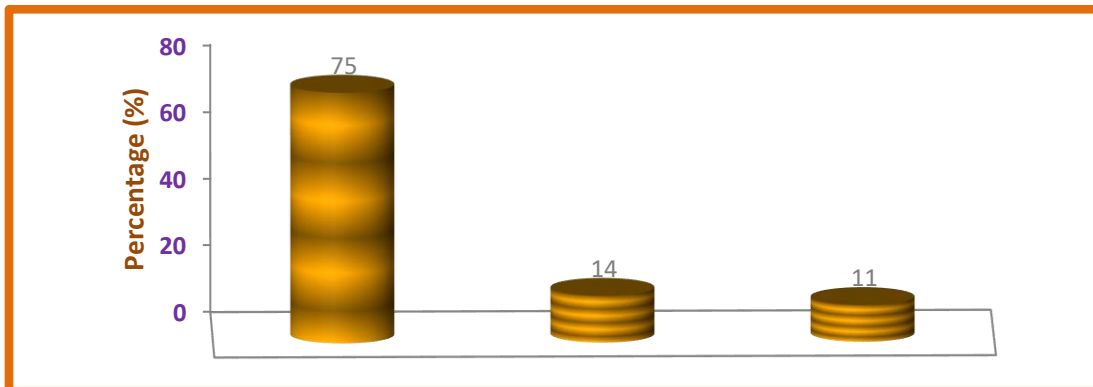


Question No =2
Teaching (any other remarks)

Good /Excellent = 390

Adequate/ Satisfactory = 75

Changes required = 52

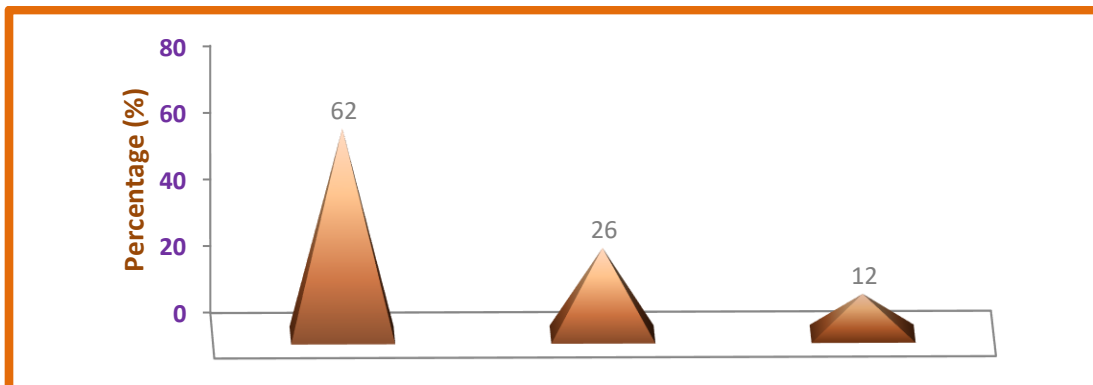


Question No =3
Teacher- Student Relationship

Good /Excellent = 320

Adequate/ Satisfactory = 140

Changes required = 55

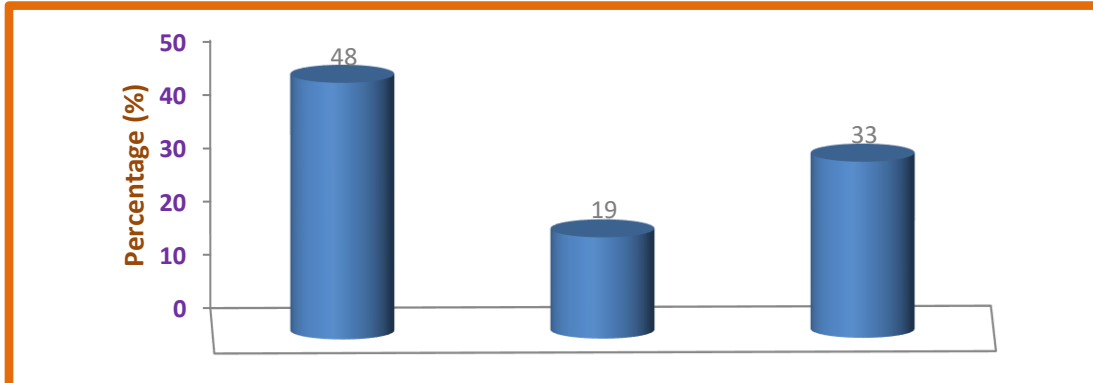


Question No =4
Infrastructure Facilities

Good /Excellent = 252

Adequate/ Satisfactory = 90

Changes required = 167

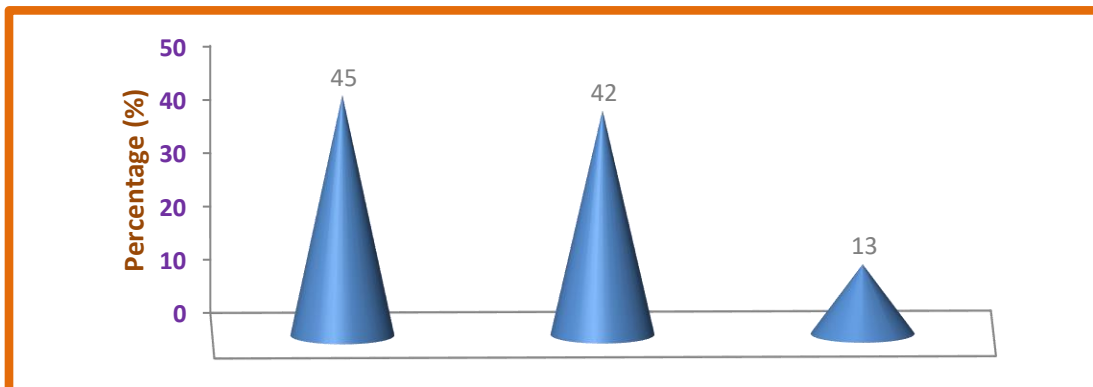


Question No = 5
Co-Curricular Activities

Good /Excellent = 242

Adequate/ Satisfactory = 220

Changes required = 65

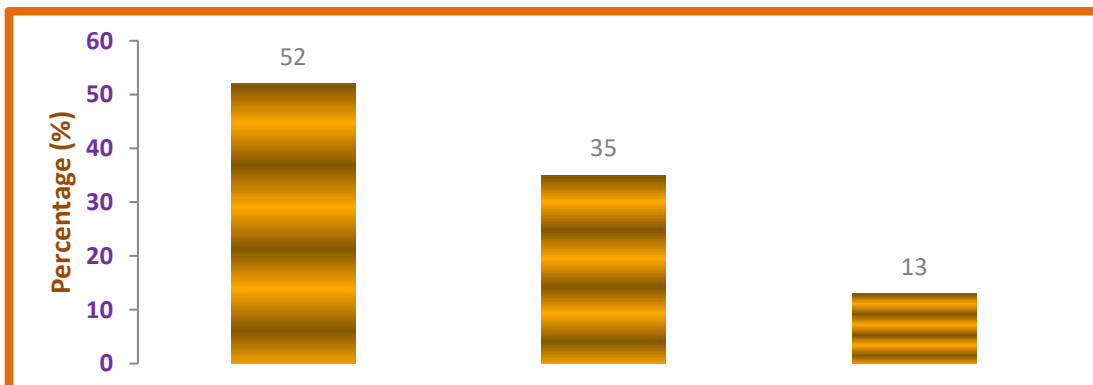


Question No = 6
Sports facilities

Good /Excellent = 274

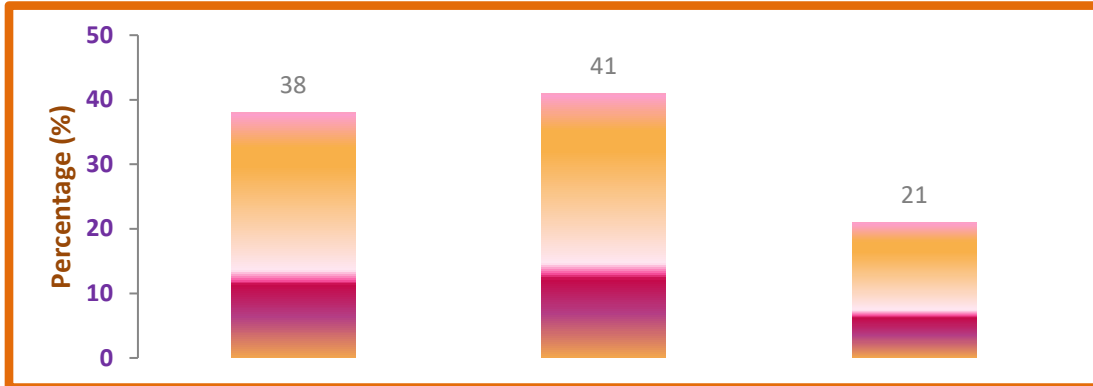
Adequate/ Satisfactory = 190

Changes required = 62



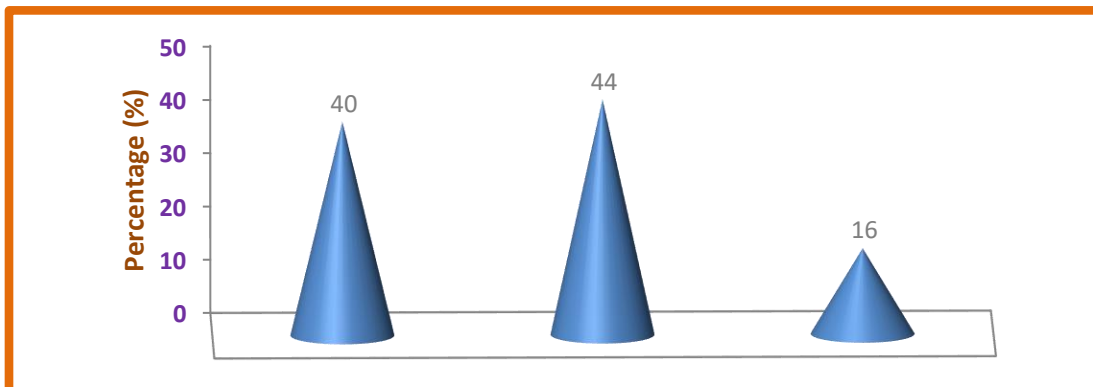
Question No = 7
Placements Activities

Good /Excellent = 189 Adequate/ Satisfactory = 207 Changes required = 102



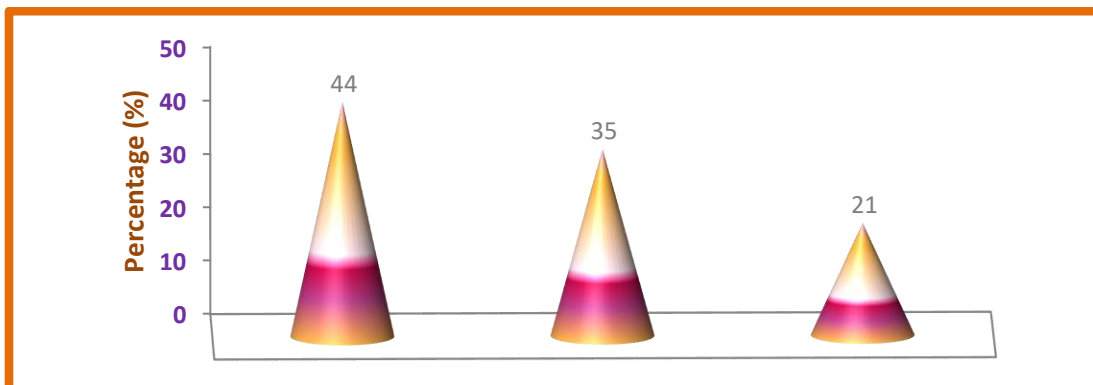
Question No = 8
Counseling Programmes

Good /Excellent = 210 Adequate/ Satisfactory = 218 Changes required = 78



Question No = 9
Skill Training Programmes

Good /Excellent = 230 Adequate/ Satisfactory = 190 Changes required = 95

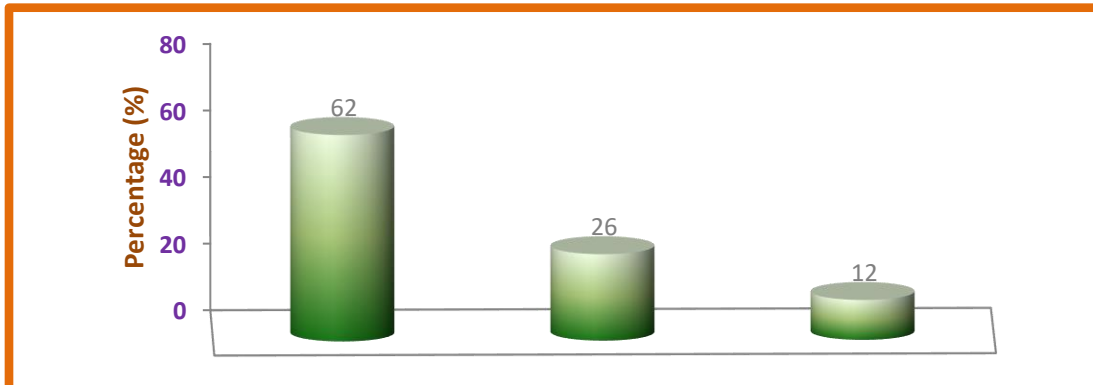


Question No = 10
Cultural Activities

Good /Excellent = 319

Adequate/ Satisfactory = 136

Changes required = 58



Question No = 11
Welfare measures

Good /Excellent = 274

Adequate/ Satisfactory = 201

Changes required = 42

